

## Commonly Asked Questions:

**Q:** How long does a crown lengthening procedure take?

**A:** The visit to perform crown lengthening is about 60 minutes long. The stitches are removed approximately one week later in a 5-10 minute visit. One or two 10 minute check-ups may be scheduled to ensure that area is ready for restoration by the dentist.

**Q:** Will the crown lengthening procedure hurt?

**A:** Only “novocaine” is necessary to perform crown lengthening. During the visit you will feel nothing once the area has been numbed. When the “novocaine” wears off, there will be some mild discomfort. Medication will be prescribed to control any discomfort you might experience. This procedure will not cause you to miss work, etc.

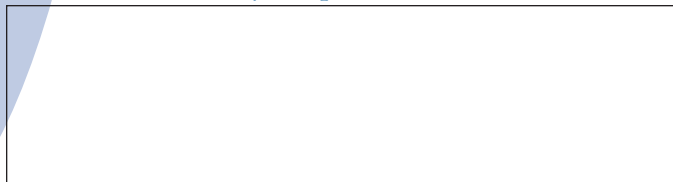
**Q:** What is the cost of crown lengthening?

**A:** The cost of the crown lengthening will vary with the situation. However, your periodontist will ensure that this is discussed with you thoroughly before proceeding with treatment. Please remember that there will be a cost for the restoration of the tooth with your dentist.

**Q:** How well will the crown lengthening work?

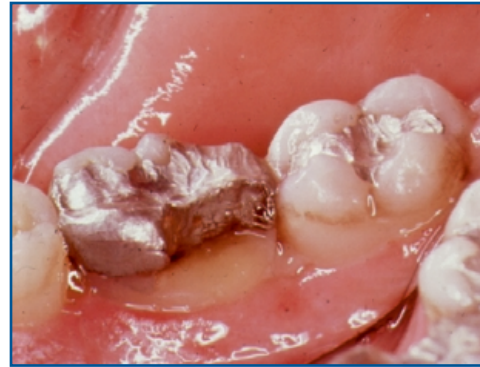
**A:** Crown lengthening is highly predictable. If the procedure is carried out correctly, the end result is a tooth which may be restored in a healthy manner and which should prove very stable over time.

**Remember, if you have any questions  
ask your periodontist.**



# Crown Lengthening

When a tooth is fractured or decay extends below the gum line, this area must be uncovered before it can be restored, for a number of reasons.



A crown lengthening procedure, which reshapes the gum and supporting tissues, will solve these problems.

In order for the gum to heal against the tooth in a healthy manner, there must be 3 millimeters of healthy tooth between the margin of a filling or cap and the crest of the bone which supports the tooth. This allows space for proper attachment of the gum to the tooth.

A tooth which is broken or decayed below the gum is also difficult, if not impossible, for your dentist to restore correctly, as access and visualization of the area is compromised.

In addition, even the best filling or cap will trap bacteria where the restoration meets the tooth.

If this area is below the gum where you can not properly clean it, the bacterial accumulation results in both periodontal problems and the formation of a new cavity at the base of the filling.

After treatment, the fractured or decayed area is uncovered and accessible to the dentist for restoration, and the needed space has been established between the supporting tissues and the final position of the restoration.



This will allow a final restoration to be placed in a healthy environment.