

Commonly Asked Questions:

Q: How long does a sinus augmentation procedure take?

A: The visit to perform a sinus augmentation procedure is approximately 1 -1.5 hours.

Q: Will the sinus augmentation procedure hurt?

A: Only “novocaine” is necessary to perform a sinus augmentation procedure. During the visit you will feel nothing once the area has been numbed. When the “Novocaine” wears off there will be some mild discomfort. Medication will be prescribed to control any discomfort you might experience. The procedure will not cause you to miss work, etc.

Q: What is the cost of a sinus augmentation procedure?

A: The cost of a sinus augmentation procedure will vary with the situation. However your dentist will ensure that this matter is discussed with you thoroughly before receiving treatment.

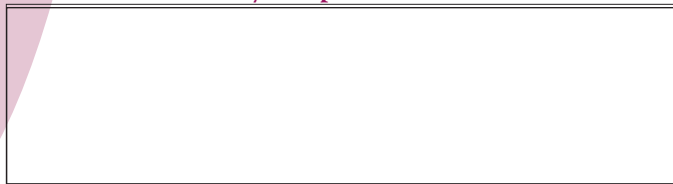
Q: How long do I have to wait after a sinus augmentation procedure is performed before having the implants placed?

A: Depending upon your individual situation, the implants may be placed at the time the sinus augmentation procedure is performed. If the implants are not placed at that time, you would wait 6-10 months after the sinus augmentation procedure to place the implants, depending on your individual situation.

Q: How well do sinus augmentation procedures work?

A: Sinus augmentation procedures are highly predictable, with studies reporting over 95% success. It is important to realize that if the sinus augmentation procedure does not result in enough bone for implant placement, additional bone may be regenerated through a second sinus augmentation procedure at the time the implants are placed.

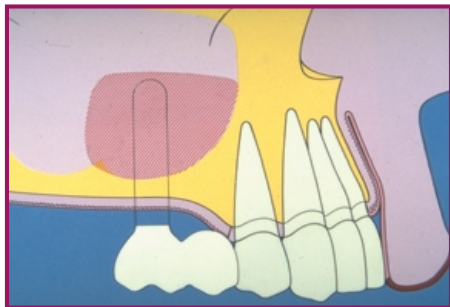
**Remember, if you have any questions
ask your periodontist.**



Sinus Augmentation

Loss of posterior teeth results in excessive forces being placed on your remaining teeth. Fortunately, the use of dental implants and crowns allows you to replace these missing teeth.

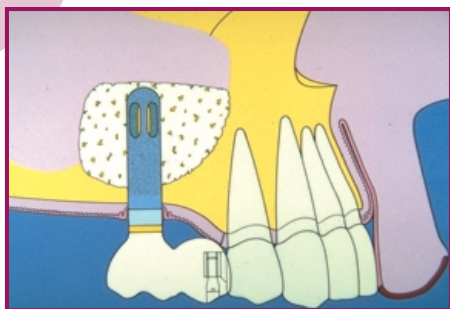
However, the position of the sinus in the upper posterior areas may be too low for proper placement of dental implants.



An implant is placed in the regenerated bone following the sinus augmentation procedure.

A simple procedure allows the sinus floor to be repositioned, creating enough space to properly place an implant.

Various calcium grafting materials are used to encourage your bone to grow more quickly into the area, helping to stabilize the dental implant. These calcium grafting materials are replaced by your own bone as it grows into the area.

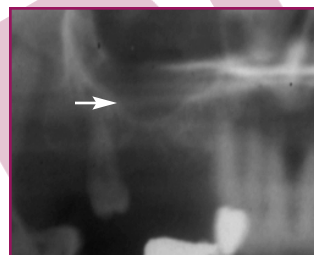


Implant placed in regenerated bone

Under certain conditions, an even simpler procedure can be utilized. When possible, the bone remaining under the sinus floor is gently “pushed up”, thus lifting the floor of the “dropped” sinus.

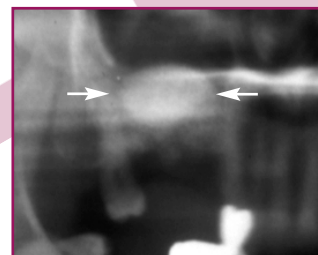
Calcium bone replacement materials are then placed beneath this lifted bone. Once again the bone replacement materials are replaced as your body grows new bone into this area.

Before

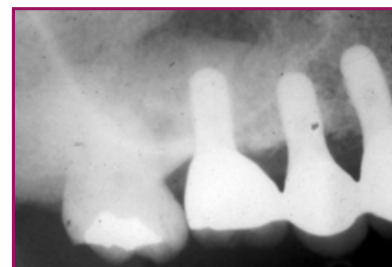


The position of the bottom of the sinus does not allow implant placement.

After



After the Sinus Augmentation Procedure, sufficient bone is present to properly place implants.



Implants have been placed in the newly formed bone, and restored with crowns.

Following sufficient healing of a sinus augmentation, (or at the time of sinus augmentation when possible) implants are placed in a predictable and successful manner.